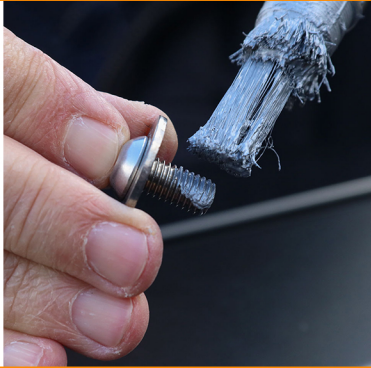


Fittings kit for Aluboxes on CargoBear

1.
Apply the included
anti-seize paste to
all fastening
screws.
(NOT to the
insertion bolt)



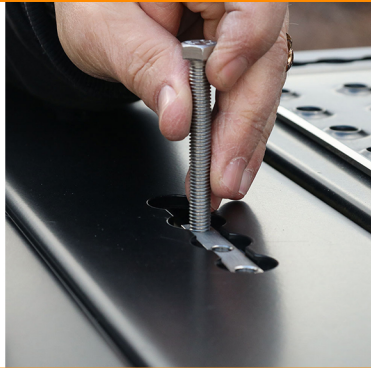
2.
Screw the
insertion bolt into
the bolt plate's
outer hole.



3.
Insert the bolt
plate into the
mounting slot



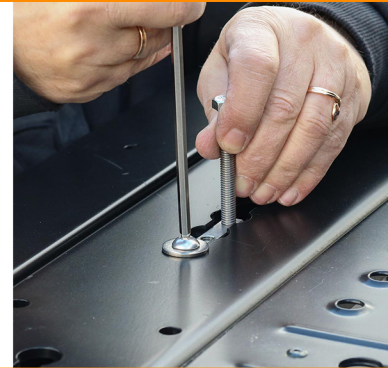
4.
Hold the bolt plate
in place with the
insertion bolt.



5.
Secure the bolt
plate with a short
fastening screw.



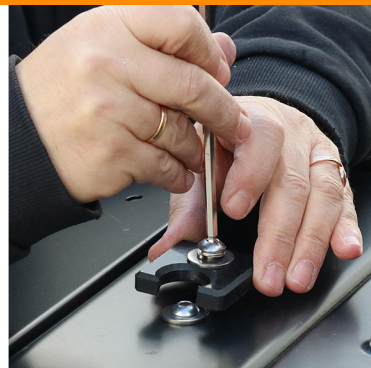
6.
Tighten the screw
with an Allen key.



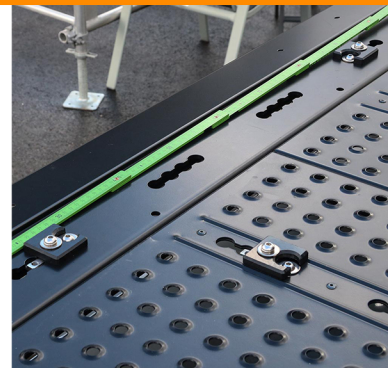
6a.
Remove the
insertion bolt.



7.
Attach the spacer
bracket with a
longer screw.
Repeat for all
mounting points.



8.
One option is to
measure the drill
points for the
Alubox.



9.
Using the packaging cardboard as a template is much easier.



10.
Cut the template about 1.5 cm smaller than the marked outline.



11.
Put the template in the bottom of the box and mark your intended mounting position on the rack.



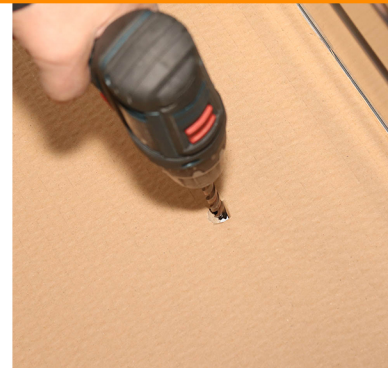
12.
Position the template correctly on the CargoBear with screws attached.



13.
Press the cardboard onto the screws to mark the drill holes.



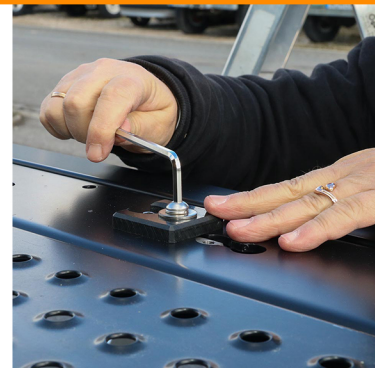
14.
Put the template back into the box and drill the holes as marked.



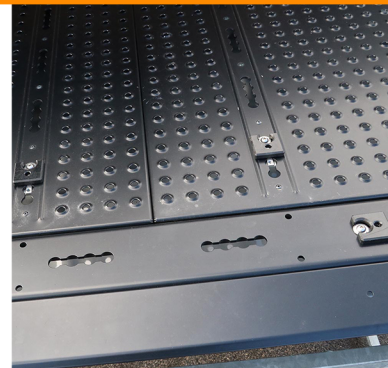
14 a.
Repeat for all markings.



15.
Unfasten and remove all spacer bracket screws.



16.
Leave all spacer brackets in their exact position on the rack.



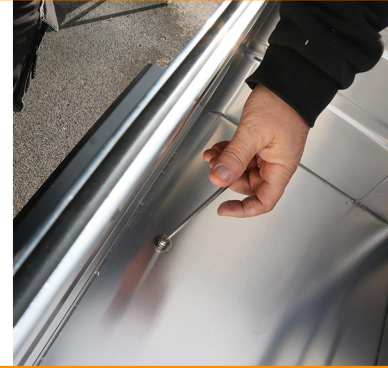
18.
Seal the washers
with butyl rubber.



19.
Screw the Alubox
onto the roof rack.



20.
Make sure all
screws are
properly t
ightened.



CAUTION! Please check the Alubox's fittings regularly.