



TF1050 Terrafirma raised air intake for 2020- Defender.



WARRANTY & DISCLAIMER - Terrafirma products are warranted free from defects in materials and workmanship for a period of 12 months from the date of retail invoice. Terrafirma does not warrant that the products manufactured or marketed by it comply with the laws of the country where those goods are purchased or used. It is the sole responsibility of the purchaser to ascertain whether products being purchased, or the fitting of those products to any other object, comply with local laws. This warranty covers structural defect and workmanship but does not cover finishes, labour charges for removal or refitting, freight costs, accident damage, misuse or abuse, damage due to incorrect or improper fitting or application, modified product, faulty design or consequential damage of any kind. Damage or defects caused by collision, alteration, improper installation, road hazards, adverse conditions or usage for any other purpose other than normal private usage are not covered by this warranty. Terrafirma shall not be liable for any other claim relating to the use of the product and any indirect special or consequential damage or injury to any person, company or other entity. All claims must be accompanied by the original retail invoice and should be submitted to the supplying Allmakes 4x4/Terrafirma distributor. This warranty covers only the replacement of the product or part concerned. The decision remains solely at the discretion of Allmakes Ltd. The information contained in this catalogue was correct at the time of going to press. Allmakes/Terrafirma and its associated companies reserve the right to alter the range and any product specifications without notice. Always consult your Allmakes/Terrafirma distributor for the latest product information and specifications. The Terrafirma range of products is constantly being evaluated for enhancement and improvement to make sure the level of quality and performance is as expected.

TF1050



The Terrafirma raised air intake attaches to the left side front wing and to the top of the A pillar.

Open the left front door, from the back prize the lower trim section away from the A pillar, remove the T30 screw from the upper trim section from the A pillar, slide the trim section downwards and remove it. Locate the round sticker that covers the hole at the top of the A pillar, install the threaded insert securely into the hole and loosely fit the rubber mount.

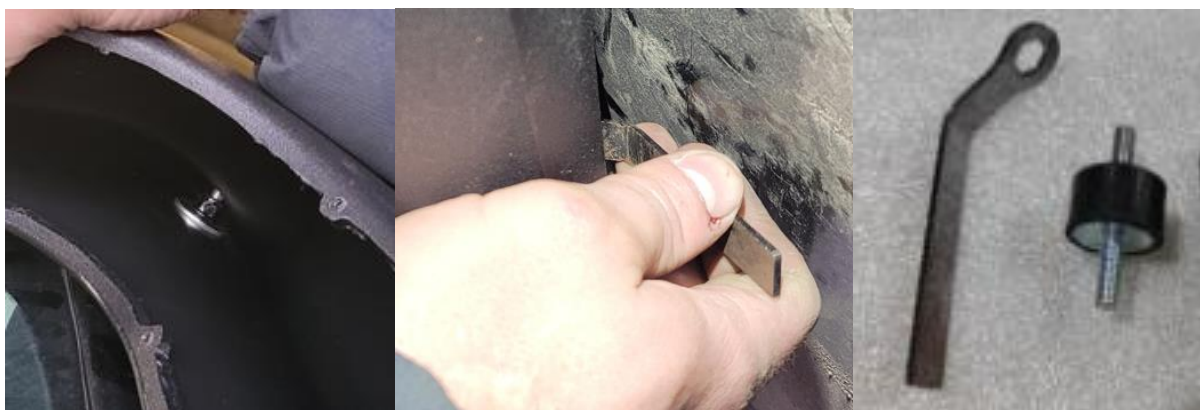
Carefully measure and drill a hole with a cone drill as small as possible to allow the trim to be repositioned correctly and the rubber mount to be screwed in place. The raised air intake will hide any inaccuracy but be as neat as possible. Refit the top and bottom trim and insert and tighten the rubber mount through the hole in the trim and into the A pillar.

Open the left front door and grip the air intake vent along the back edge, pull the vent away from the front wing. Take care not to trap your fingers

Remove the dummy grill from the front of the raised air intake.

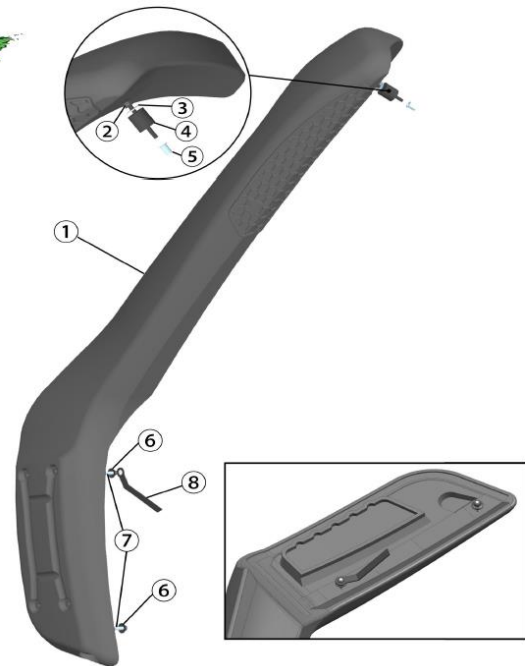
Place the raised air intake over the vent opening in the wing, carefully pushing the studs through the holes in the back edge of the wing. Through the opening in the top of the raised intake position the stud through the mounting hole in the raised air intake and loosely fit the M6 nut and washer.

Open the left front door and with your finger tips wind the M6 flange nuts as far as you can onto the studs between the front edge of the door and the wing. Before tightening make sure the raised air intake is in a comfortable position, then using the cranked 10mm wrench provided tighten the flange nuts. Finally tighten the nut and washer in the top of the raised air intake and replace the dummy front grill.



WARRANTY & DISCLAIMER - Terrafirma products are warranted free from defects in materials and workmanship for a period of 12 months from the date of retail invoice. Terrafirma does not warrant that the products manufactured or marketed by it comply with the laws of the country where those goods are purchased or used. It is the sole responsibility of the purchaser to ascertain whether products being purchased, or the fitting of those products to any other object, comply with local laws. This warranty covers structural defect and workmanship but does not cover finishes, labour charges for removal or refitting, freight costs, accident damage, misuse or abuse, damage due to incorrect or improper fitment or application, modified product, faulty design or consequential damage of any kind. Damage or defects caused by collision, alteration, improper installation, road hazards, adverse conditions or usage for any other purpose other than normal private usage are not covered by this warranty. Terrafirma shall not be liable for any other claim relating to the use of the product and any indirect special or consequential damage or injury to any person, company or other entity. All claims must be accompanied by the original retail invoice and should be submitted to the supplying Allmakes 4x4/Terrafirma distributor. This warranty covers only the replacement of the product or part concerned. The decision remains solely at the discretion of Allmakes Ltd. The information contained in this catalogue was correct at the time of going to press. Allmakes/Terrafirma and its associated companies reserve the right to alter the range and any product specifications without notice. Always consult your Allmakes/Terrafirma distributor for the latest product information and specifications. The Terrafirma range of products is constantly being evaluated for enhancement and improvement to make sure the level of quality and performance is as expected.

TF1050



No.	Description	QTY
1	Raised Air Intake main body	1
2	M6 nut	1
3	M6 washer	1
4	Spacer with screw M6*18 D25*H25	1
5	M6 blind rivet nuts	1
6	M6 nut with washer	2
7	M6*25mm Screw Bolt	2
8	Wrench	1

TerrafirMa
Serious 4x4 Accessories

ITEM #	DRAWING TITLE	REV
TF1050	Raised Air Intake	1

WARRANTY & DISCLAIMER - TerrafirMa products are warranted free from defects in materials and workmanship for a period of 12 months from the date of retail invoice. TerrafirMa does not warrant that the products manufactured or marketed by it comply with the laws of the country where those goods are purchased or used. It is the sole responsibility of the purchaser to ascertain whether products being purchased, or the fitting of those products to any other object, comply with local laws. This warranty covers structural defect and workmanship but does not cover finishes, labour charges for removal or refitting, freight costs, accident damage, misuse or abuse, damage due to incorrect or improper fitment or application, modified product, faulty design or consequential damage of any kind. Damage or defects caused by collision, alteration, improper installation, road hazards, adverse conditions or usage for any other purpose other than normal private usage are not covered by this warranty. TerrafirMa shall not be liable for any other claim relating to the use of the product and any indirect special or consequential damage or injury to any person, company or other entity. All claims must be accompanied by the original retail invoice and should be submitted to the supplying Allmakes 4x4/TerrafirMa distributor. This warranty covers only the replacement of the product or part concerned. The decision remains solely at the discretion of Allmakes Ltd. The information contained in this catalogue was correct at the time of going to press. Allmakes/TerrafirMa and its associated companies reserve the right to alter the range and any product specifications without notice. Always consult your Allmakes/TerrafirMa distributor for the latest product information and specifications. The TerrafirMa range of products is constantly being evaluated for enhancement and improvement to make sure the level of quality and performance is as expected.

TF1050