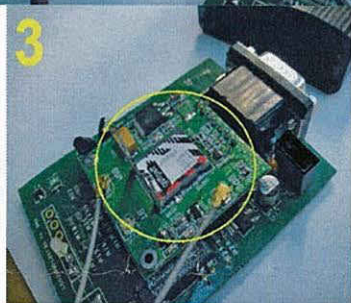
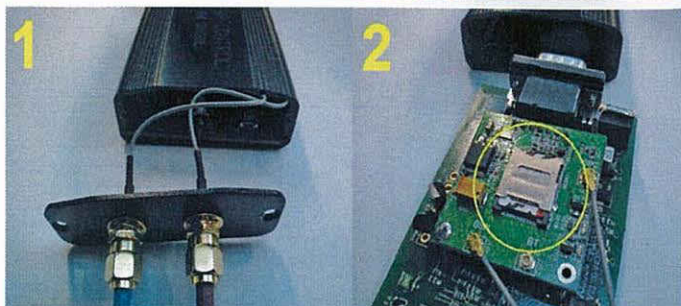


INSTRUCTIONS

FBH Heater Controller GSM & GPS Tracker

Part Number: ARSZH-DIS3RRS



Minimum requirements for wiring installation

Active SIM card MUST be fitted with a valid SMS credit balance before wiring is done.

Red = 12V Main battery power

Black with White Trace = Chassis GND

Green = Pin 2 of FBH heater

Blue = Head light sense

GSM&GPS Antenna

Note - LHD cars may need to lengthen the wires to accommodate the battery on opposite side of the car.

Complete FBHIC3 main wiring loom details

Black with White trace

Chassis GND

Green

Pin 2 of FBH heater, NOTE: if a Red wire is already present, REMOVE IT FIRST.

Blue

Head light sense (Connects to the head light LOW BEAM wire for FBH activation, trigger by making the lights come on for 5 seconds and then back off again using the Land Rover Button on the key.)

Red

12V Main battery power (Should NOT be connected to auxiliary batteries)

Purple

AUX 1 (OPTIONAL USE - GND trigger for external LED or relay)

Yellow

mp sensor B (OPTIONAL USE - available separately)

Grey

SW1 (OPTIONAL USE - Used to externally trigger the FBH start/stop by momentarily holding to GND for 2 seconds) Can be used for external switching.

White

Temp sensor A (Fitted as standard to monitor external temperature)

Orange

AUX 2 (OPTIONAL USE - Active for the last ¼ of the heaters run time)

Brown

12V, 1Amp Power out (OPTIONAL USE - Active for the duration of heater running) Use for external relay triggering or visible LED.

Red & Black trace

2v Ignition sense (OPTIONAL USE - When connected improves engine running detection)

SIM card

Buy own SIM and activate it beforehand. SIM card used must be compatible for use in 2G device. Vodafone, EE and O2 are recommended. ARSZH-DIS3RRS DOES NOT support the 3 network. **Note** - Please also be aware, understand and abide by any usage terms from your SIM card provider.

Compatible with

Discovery 3

2.7L Webasto thermo top V heater

Discovery 4

Webasto thermo top V heater up to MY2016 (Timed Climate by radio software activation on car must be already done)

Range Rover Sport 2.7L & 3.6L

Webasto thermo top V heaters

Fitting a SIM card

1. Remove the two screws holding the end plate as shown.
2. Gently slide the cover open making sure not to damage the antenna cables.
3. Next gently slide out the main PCB exposing the SIM card holder.
4. Slide the silver SIM card lock to one side and lift it up to access the SIM slot.
5. Insert your 2G compatible micro-SIM and close the SIM card lock, re-install the main PCB into the case and fasten the two end plate screws as shown in picture (1) above.

Disclaimer

These fitting instructions are intended for general guidance only. No responsibility will be accepted for damage to persons, property, equipment or vehicles caused during or arising from the fitting or using of this product. Fitting this item to your vehicle may constitute a vehicle modification and therefore we strongly recommend that you check the product complies with local laws and legislation and always inform the vehicle's insurance company accordingly.

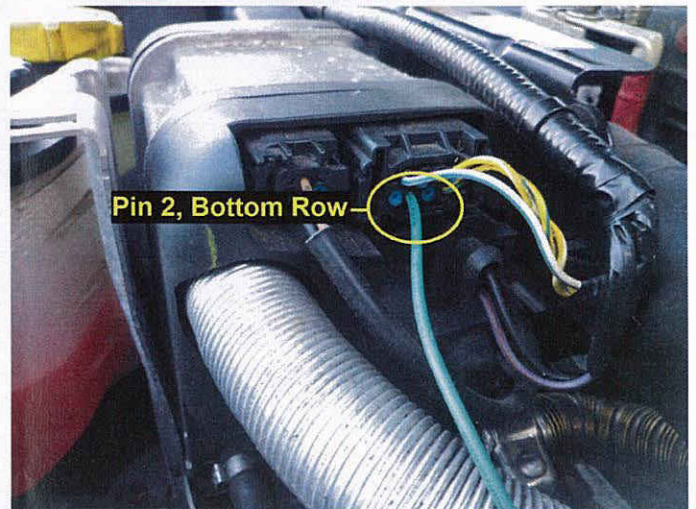
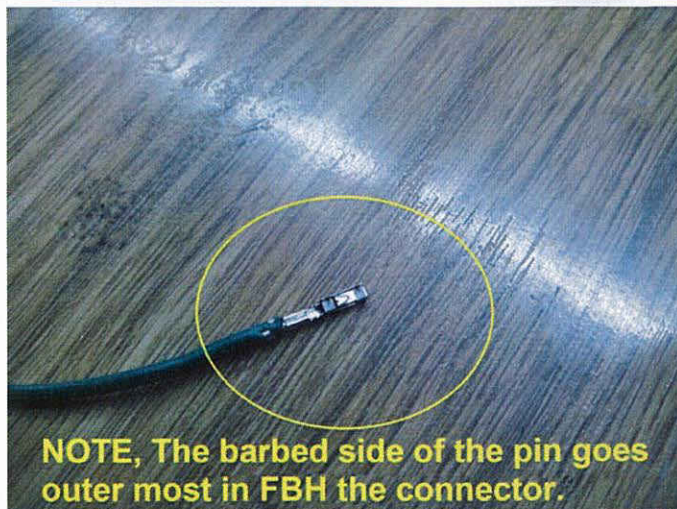
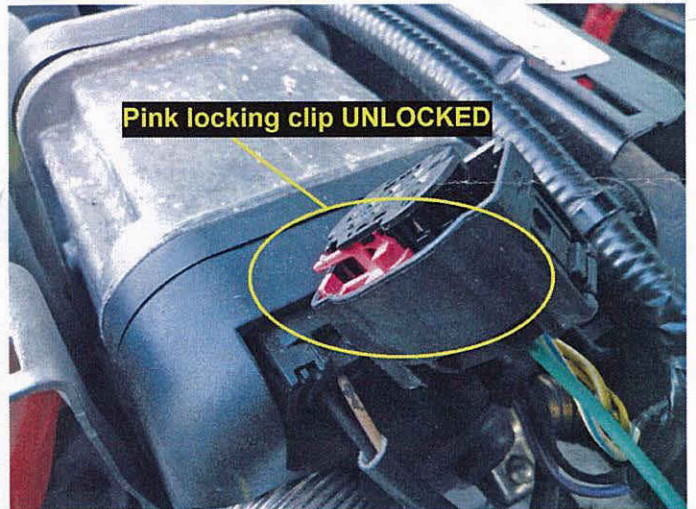
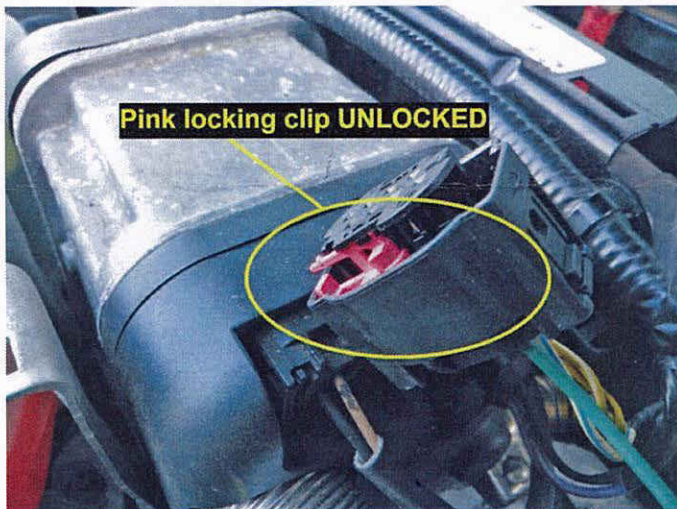
FITTING INSTRUCTIONS - continued



Connecting the antenna

Connect the antenna cables to the main FBHIC3 module make sure to get them the right way around as seen in the picture left. (The round antenna base can be mounted behind the front grill on the diagonal bars using a double sided sticking pad).

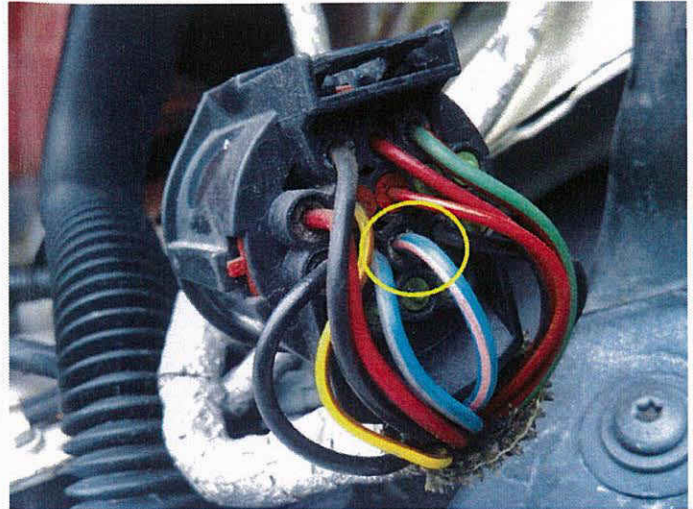
Connecting Green wire to the heater



FITTING INSTRUCTIONS - continued

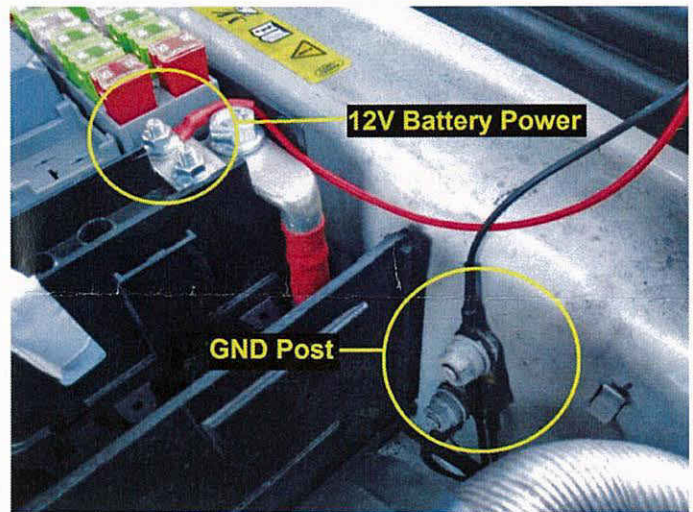
Head light wire connection

The connection made to Pin 11 of the head light loom 'blue wire with pink trace' should be done either with soldering as a spliced joint or with a butt crimp connector making sure you 'T' into the wire leaving the original wire connecting to the headlight.



GND & Power connections

If preferred you can fit an additional 3A fuse in the RED 12V Battery Power wire for added protection, or solder into the cars fusebox wiring utilising the FBH original 5A fuse that is present.



Pair your phone to the FBHIC3

After wiring and connecting the FBHIC3 to the car for the first time allow it to get GSM & GPS signal for at least 10 minutes before trying to send ANY SMS instructions or pairing commands to the unit.

The unit has 3 spaces for control phone numbers, T1, T2 & T3.
The (Master) number will be stored in T1 location by default.

Send an SMS to the FBHIC3 with the characters HE and wait for the unit to respond with standard help message main menu, this gives you SMS instruction help for use of the module.

Cmd:HE (Time Is Shown Here)

Help is available for:

ON OT DT OF TR TM SS TQ RT TI TE CF CO CP ML GP DI

Use HE xx for details.

After you get the above message reply in SMS your phone is now paired to the FBHIC3 location T1. You can now browse through the help menu information for more "how-to" use on the module