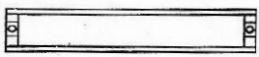
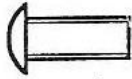
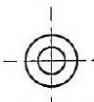

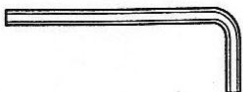


**LAND ROVER DISCOVERY 1994 - 98**

REAR LAMP GUARDS / PROTEGE-PHARES ARRIERE  
RUCKLEUCHTENSCHUTZ / PROTEZIONI LUCI POSTERIORI  
DEFENSAS DE FAROS TRASERAS / BESCHERMROOSTERS ACHTERLICHTEN

Mount guard as detailed in Fig. 1 noting attitude of guard when fitted as Fig. 2. Note; The guards are not handed.

Part No.		Quantity	Description
A		2	LAMP GUARD
B		4	M6 x 16 s/s BUTTON HD SCREW
C		4	M6 NYLON WASHER
D		4	M6 NUT RETAINER
E		1	M4 ALLEN KEY

**(GB) WARNING**  
Accessories which are not properly fitted can be dangerous. Read the instructions carefully prior to fitting. Whilst fitting, comply with the instructions at all times.

**(F) ATTENTION**  
Des accessoires non fixés correctement peuvent être dangereux. Lisez attentivement les instructions de montage avant la pose. Bien que cette dernière corresponde aux instructions.

**(E) AVISO**  
Aquellos accesorios que no hayan sido ajustados debida mente pueden resultar peligrosos. Lea las instrucciones detenidamente antes de iniciar el montaje. Durante el montaje siga las instrucciones en todo momento.

**(I) AVVERTENZA**  
Gli accessori non sistemati come previsto possono essere pericolosi. Leggere attentamente le istruzioni prima del fissaggio. Durante il montaggio seguire sempre le relative istruzioni.

**(D) ACHTUNG!**  
Nicht sachgemäß montiertes Zubehör kann gefährlich sein. Lesen Sie Montageanleitung sorgfältig durch, bevor Sie das Teil montieren. Halten Sie sich bei der Montage an die Anleitung.

**(P) ADVERTÊNCIA**  
Os Acessórios que não são montados adequadamente podem ser perigosos. Leia as instruções cuidadosamente antes de montar. Durante a montagem, obedeça as instruções todo o tempo.

**(NL) WAARSCHUWING**  
Accessoires die niet op de juiste wijze zijn gemonteerd kunnen gevaar opleveren. Lees zorgvuldig de instructies alvorens met de montage te beginnen. Houd u tijdens de montage te allen tijde aan de instructies.

**(GB) The following instructions are valid for both sides of the vehicle.**

**(F) Les instructions suivantes sont applicables aux deux côtés du véhicule.**

**(I) Les istruzioni seguenti sono valide per entrambe le fiancate della Vettura.**

**(E) Las siguientes instrucciones son válidas para ambos lados del vehículo.**

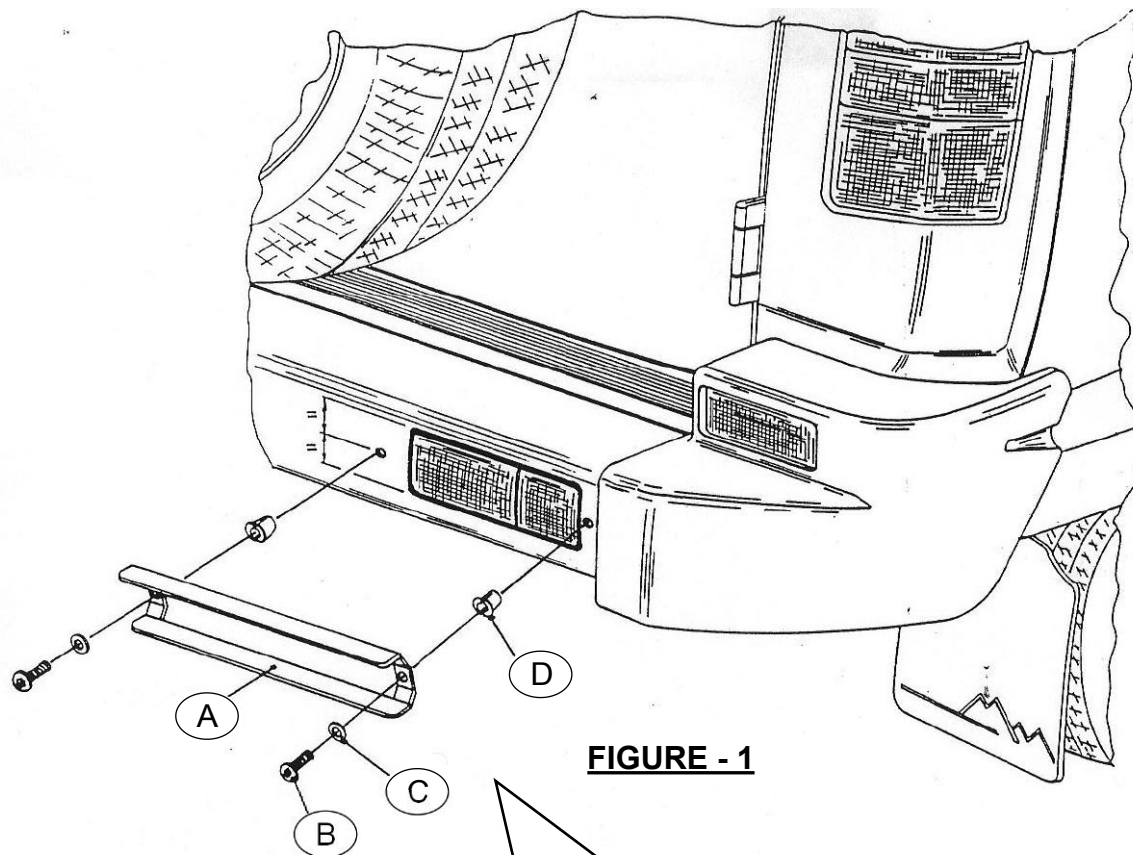
**(D) Folgende Anweisungen gelten für beide Fahrzeugseiten.**

**(P) As instruções a seguir aplicam-se a ambos os lados do veículo.**

**(NL) De volgende instructies zijn van toepassing op beide zijden van de auto.**

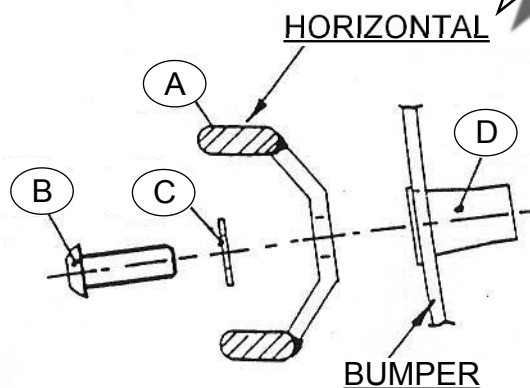
**LAND ROVER DISCOVERY 1994 - 98**

REAR LAMP GUARDS / PROTEGE-PHARES ARRIERE  
RUCKLEUCHTENSCHUTZ / PROTEZIONI LUCI POSTERIORI  
DEFENSAS DE FAROS TRASERAS / BESCHERMROOSTERS ACHTERLICHTEN



**FIGURE - 1**

POSITION LAMP GUARD (A) ON C/L OF BUMPER LAMP CLUSTER, MARK OFF AND DRILL x2 10.5-10.7mm (27/64") DIA HOLES. TOUCH IN BARE METAL WITH RUST RESISTANT PAINT. PUSH IN FIXINGS (D). MOUNT GUARD USING FIXINGS (B) - (C) ENSURING THAT SLATS ARE HORIZONTAL (SEE FIG-2).



**FIGURE - 2**